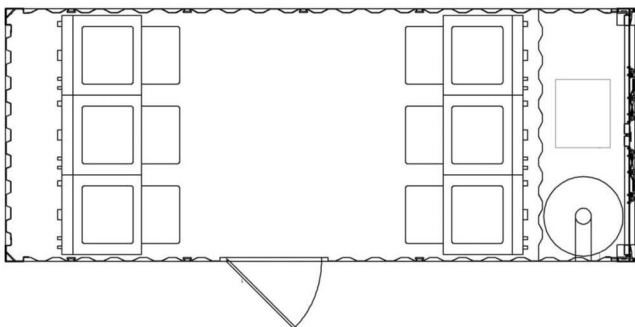
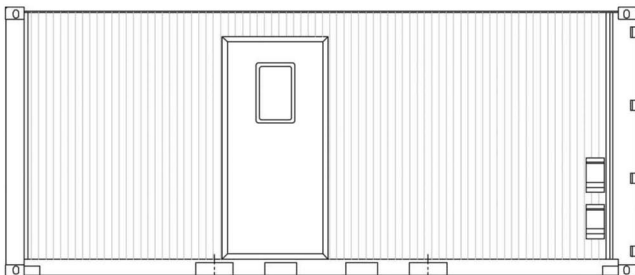




## CONTAINERIZED LAUNDRY UNIT

ISO 9001:2008 CERTIFIED



Each Containerized Laundry Unit contains 6 washing machines, 6 dryers, hot and cold water, and interior lighting inside a 20' ISO container. The units can be used independently or combined together to support larger exercises.

They can be positioned on the ground or left on the chassis for added flexibility and are ideal for military exercises, special events or disaster relief operations.

### SPECIFICATIONS:

Washers / Dryers:	6 / 6
Water Heater:	100 Gal. - LP Gas or Electric
Water Inlet:	Garden Hose
Weight:	8,000 lbs
Footprint:	8' x 20'
Power:	50A 220V Plug
HVAC:	1-Ton Heat/AC unit